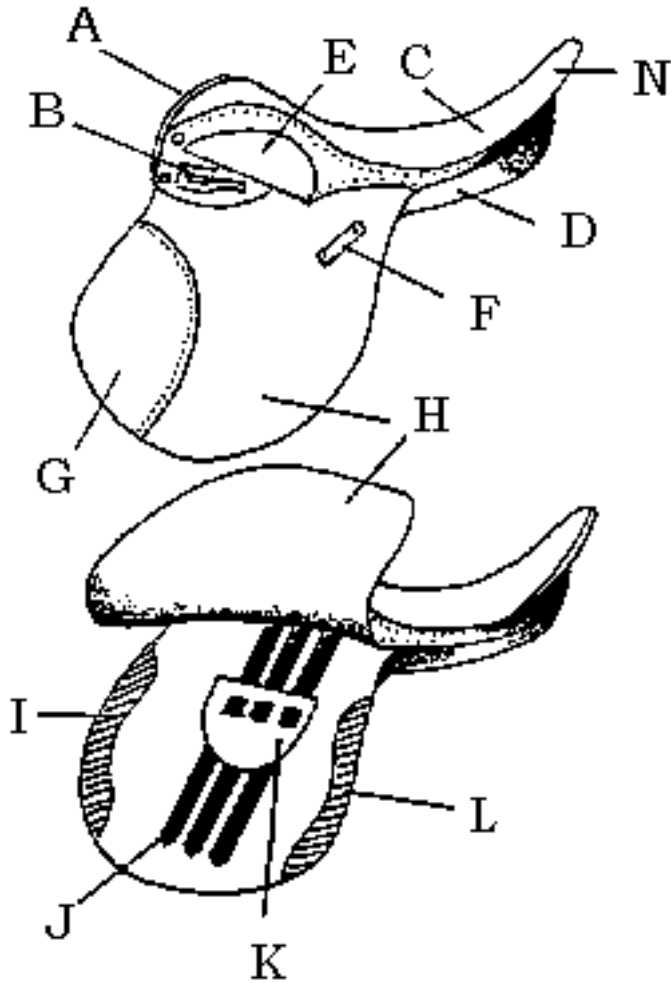
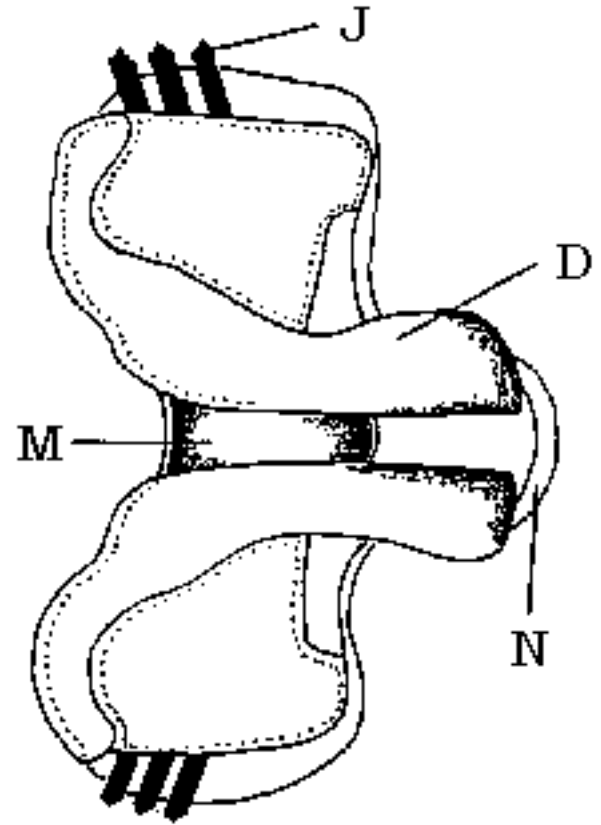


Parts of English Saddles



- A - Pommel
- B - Stirrup Bar
- C - Seat
- D - Panel
- E - Skirt
- F - Stirrup
Leather Keeper
- G - Knee Insert
- H - Saddle Flap
- I - Knee Roll
- J - Billet Straps
- K - Girth Buckle
Guard
- L - Thigh Roll
- M - Gullet
- N - Cantle



English saddles are measured by placing a tape measure from the nickle button below the pommel to the center of the cantle. All purpose forward seat and dressage saddles range in size from 14" thru 18½" in ½" increments. Lane Fox saddles generally range from 17" to 22" in 1" increments.